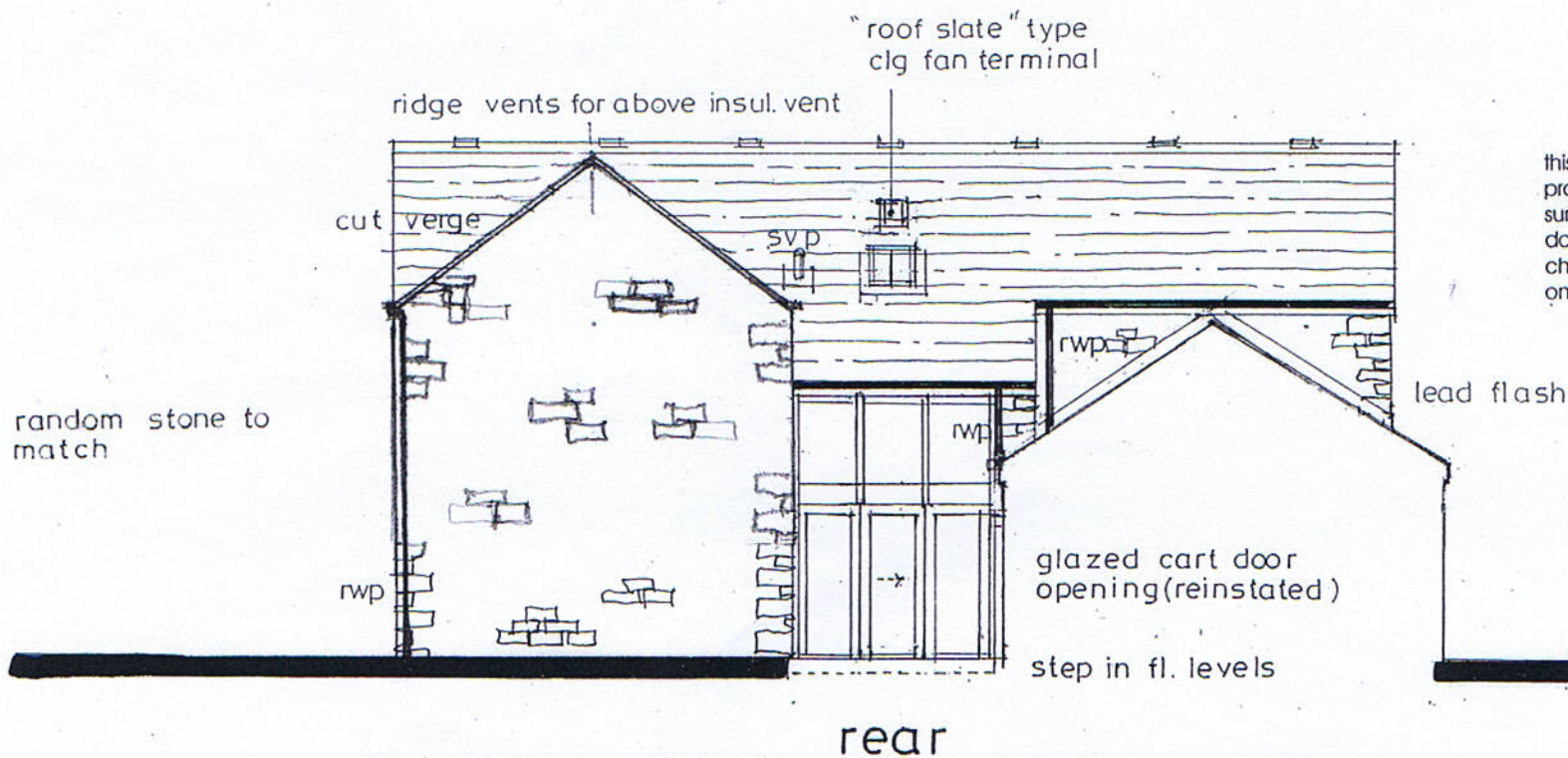
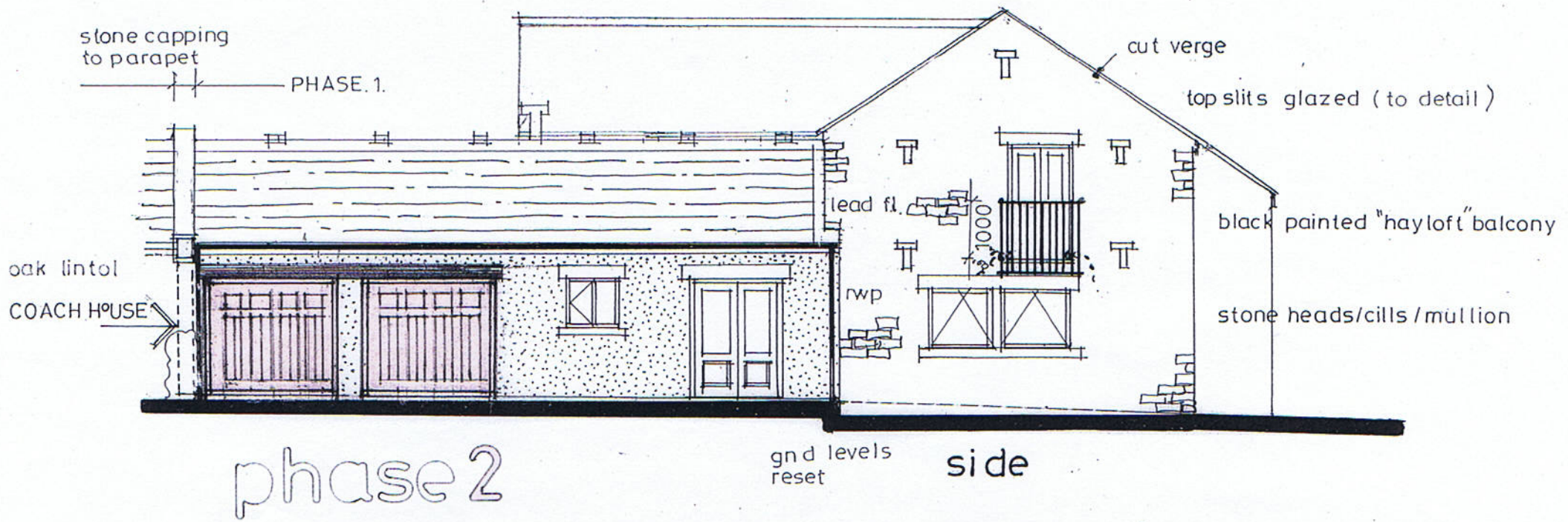


read in conjunction with specification  
engineers report / calcs and bat survey



\* SEE PHASE 1 PLANS FOR FULL DETAILS  
OF AMENDMENTS BEING SOUGHT \*

SOUTH MIRY FOLD BARN acland banks

proposed elevations

date	15	08	08	drawing no	
scale	1	:	100	610.w. 02b	
drawn	d	p	t	a	

© d p t kirkwood church road treales preston lancashire pr4 3sh tel 01772 68 66 66